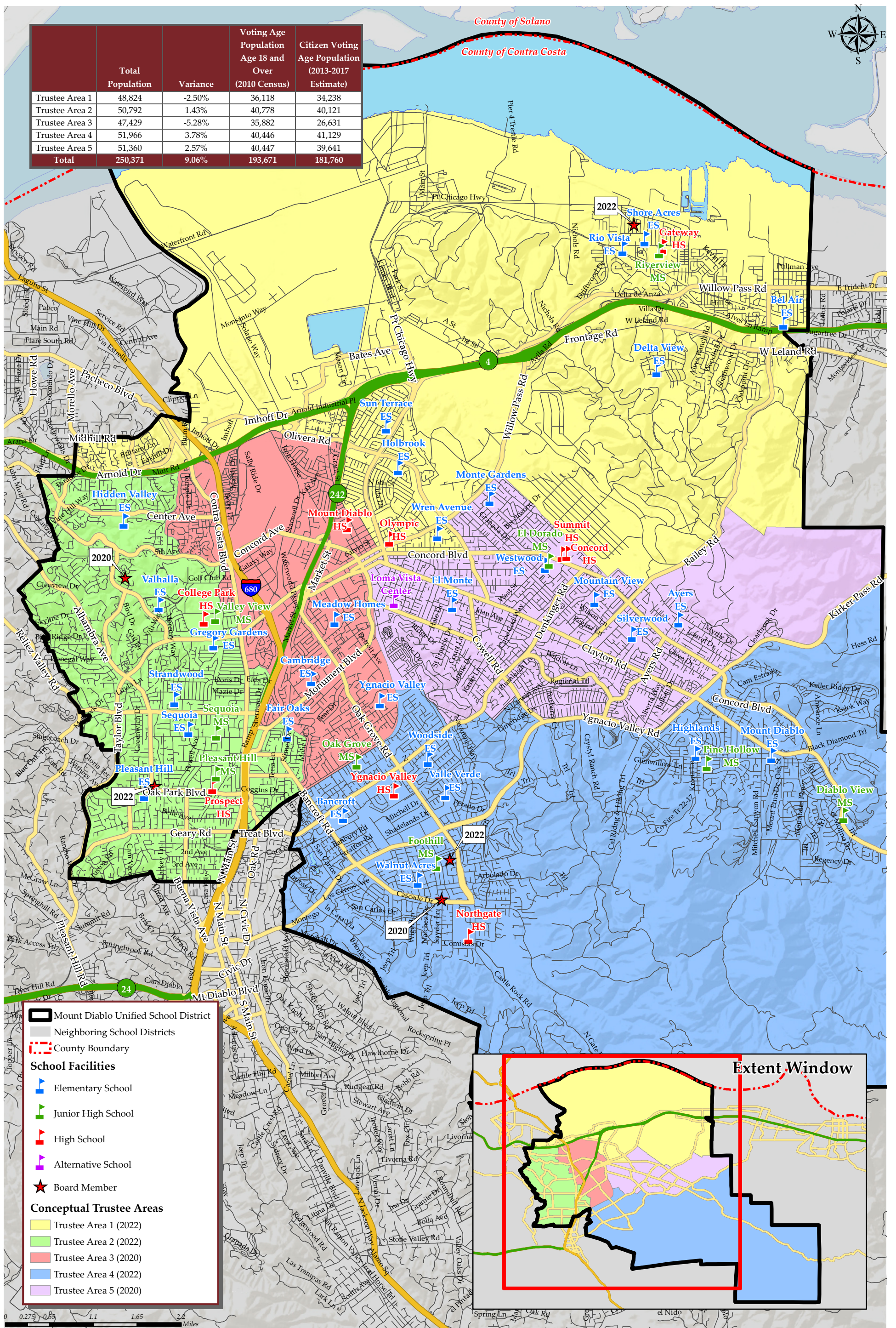


# MT DIABLO UNIFIED SCHOOL DISTRICT CONCEPTUAL TRUSTEE AREAS - SCENARIO PURPLE

	Total Population	Variance	Voting Age Population Age 18 and Over (2010 Census)	Citizen Voting Age Population (2013-2017 Estimate)
Trustee Area 1	48,824	-2.50%	36,118	34,238
Trustee Area 2	50,792	1.43%	40,778	40,121
Trustee Area 3	47,429	-5.28%	35,882	26,631
Trustee Area 4	51,966	3.78%	40,446	41,129
Trustee Area 5	51,360	2.57%	40,447	39,641
<b>Total</b>	<b>250,371</b>	<b>9.06%</b>	<b>193,671</b>	<b>181,760</b>



0 0.275 0.55 1.1 1.65 2.2 Miles  
September 2019



**MT DIABLO UNIFIED SCHOOL DISTRICT**  
**CONCEPTUAL TRUSTEE AREAS - SCENARIO PURPLE**

Total Population (2010 Census)						
	Trustee Area 1	Trustee Area 2	Trustee Area 3	Trustee Area 4	Trustee Area 5	Variance
Population	48,824	50,792	47,429	51,966	51,360	
Population Variance	-1,250	718	-2,645	1,892	1,286	
	-2.50%	1.43%	-5.28%	3.78%	2.57%	9.06%
Hispanic/Latino	18,530	6,012	21,733	4,855	10,160	
	37.95%	11.84%	45.82%	9.34%	19.78%	
White	17,017	35,289	16,676	37,391	31,087	
	34.85%	69.48%	35.16%	71.95%	60.53%	
Black/ African American	3,877	1,026	2,028	754	1,332	
	7.94%	2.02%	4.28%	1.45%	2.59%	
American Indian/ Alaska Native	176	119	135	120	159	
	0.36%	0.23%	0.28%	0.23%	0.31%	
Asian	6,993	6,138	4,859	6,630	6,092	
	14.32%	12.08%	10.24%	12.76%	11.86%	
Native Hawaiian/ Other Pacific Islander	354	77	355	113	215	
	0.73%	0.15%	0.75%	0.22%	0.42%	
Other	131	91	105	141	137	
	0.27%	0.18%	0.22%	0.27%	0.27%	
Two or More Races	1,746	2,040	1,538	1,962	2,178	
	3.58%	4.02%	3.24%	3.78%	4.24%	

Population 18 and Over (2010 Census)						
	Trustee Area 1	Trustee Area 2	Trustee Area 3	Trustee Area 4	Trustee Area 5	
Population	36,118	40,778	35,882	40,446	40,447	
Population Variance	-2,616	2,044	-2,852	1,712	1,713	
	-6.75%	5.28%	-7.36%	4.42%	4.42%	
Hispanic/Latino	11,937	4,190	14,407	3,299	6,887	
	33.05%	10.28%	40.15%	8.16%	17.03%	
White	14,343	29,237	14,450	30,065	25,909	
	39.71%	71.70%	40.27%	74.33%	64.06%	
Black/ African American	2,777	765	1,548	606	1,026	
	7.69%	1.88%	4.31%	1.50%	2.54%	
American Indian/ Alaska Native	152	107	108	87	130	
	0.42%	0.26%	0.30%	0.22%	0.32%	
Asian	5,564	5,249	4,091	5,268	4,997	
	15.41%	12.87%	11.40%	13.02%	12.35%	
Native Hawaiian/ Other Pacific Islander	247	61	252	88	162	
	0.68%	0.15%	0.70%	0.22%	0.40%	
Other	92	64	72	84	93	
	0.25%	0.16%	0.20%	0.21%	0.23%	
Two or More Races	1,006	1,105	954	949	1,243	
	2.79%	2.71%	2.66%	2.35%	3.07%	

Citizens by Voting Age Population Estimate (2013-2017)						
	Trustee Area 1	Trustee Area 2	Trustee Area 3	Trustee Area 4	Trustee Area 5	
Population	34,238	40,121	26,631	41,129	39,641	
Population Variance	-2,114	3,769	-9,721	4,777	3,289	
	-5.82%	10.37%	-26.74%	13.14%	9.05%	
Hispanic/Latino	8,962	3,955	6,796	3,812	6,244	
	26.18%	9.86%	25.52%	9.27%	15.75%	
White	14,593	29,381	13,253	30,527	25,952	
	42.62%	73.23%	49.77%	74.22%	65.47%	
Black/ African American	3,208	1,098	1,755	557	1,642	
	9.37%	2.74%	6.59%	1.35%	4.14%	
American Indian/ Alaska Native	153	70	58	95	88	
	0.45%	0.17%	0.22%	0.23%	0.22%	
Asian	5,808	3,834	3,485	4,870	4,242	
	16.96%	9.56%	13.09%	11.84%	10.70%	
Native Hawaiian/ Other Pacific Islander	255	197	84	70	120	
	0.74%	0.49%	0.32%	0.17%	0.30%	
Other	0	0	0	0	0	
	0.00%	0.00%	0.00%	0.00%	0.00%	
Two or More Races	1,259	1,586	1,200	1,198	1,353	
	3.68%	3.95%	4.51%	2.91%	3.41%	

ACS Age Groups (2017 Estimates) <sup>[1]</sup>						
	Trustee Area 1	Trustee Area 2	Trustee Area 3	Trustee Area 4	Trustee Area 5	
Under 18 Years Old	24.57%	18.69%	23.45%	21.58%	20.02%	
18-24 Years Old	10.23%	7.55%	8.36%	6.10%	7.64%	
25-34 Years Old	14.62%	14.19%	19.57%	9.79%	14.78%	
35-54 Years Old	27.82%	27.62%	27.63%	27.16%	26.71%	
55-64 Years Old	12.65%	14.79%	11.01%	15.22%	14.29%	
Over 64 Years Old	10.11%	17.16%	9.98%	20.15%	16.56%	
Total	100.00%	100.00%	100.00%	100.00%	100.00%	

ACS Renters vs Owners (2017 Estimates) <sup>[1]</sup>						
	Trustee Area 1	Trustee Area 2	Trustee Area 3	Trustee Area 4	Trustee Area 5	
Total Owners	60.76%	61.20%	38.91%	81.84%	68.76%	
Total Renters	39.24%	38.80%	61.09%	18.16%	31.24%	
Total	100.00%	100.00%	100.00%	100.00%	100.00%	

ACS Profile Income by Household (2017 Estimates) <sup>[1]</sup>						
	Trustee Area 1	Trustee Area 2	Trustee Area 3	Trustee Area 4	Trustee Area 5	
Income \$0-25k	17.90%	11.84%	19.21%	7.38%	11.07%	
Income \$25-50k	19.68%	11.23%	24.02%	10.06%	14.89%	
Income \$50-100k	30.72%	25.33%	31.68%	23.10%	31.06%	
Income \$100-150k	16.13%	22.54%	16.30%	18.69%	25.08%	
Income \$150k+	15.57%	29.06%	8.79%	40.77%	17.90%	
Total	100.00%	100.00%	100.00%	100.00%	100.00%	

[1] Based off estimates prepared by the Census Bureau